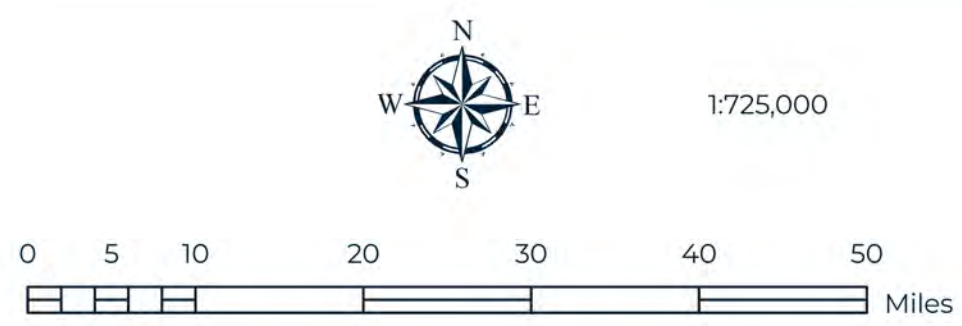
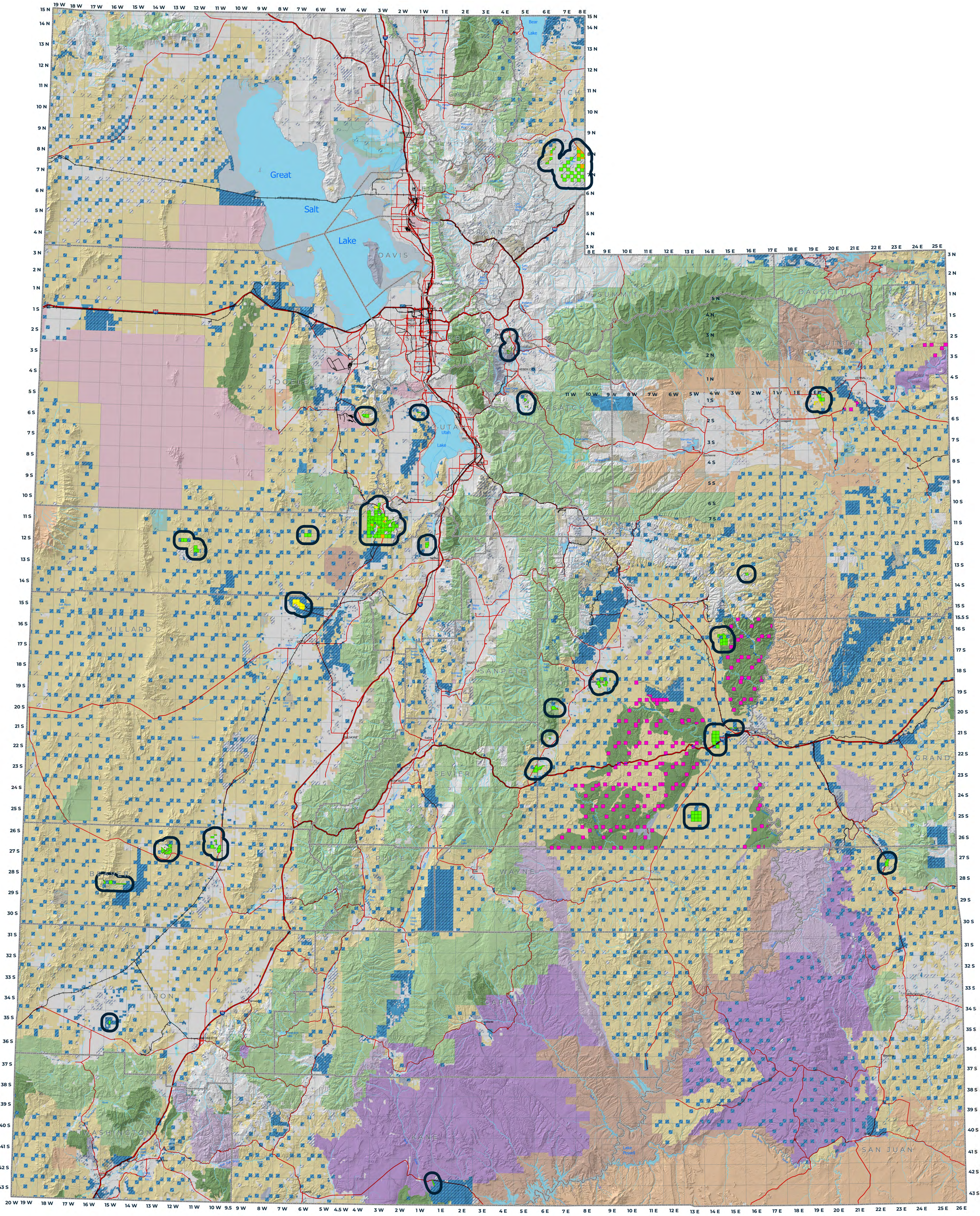


JOHN D. DINGELL JR. CONSERVATION, MANAGEMENT AND RECREATION ACT

February 2025



Emery County Public Land Management Act of 2019

- Federal Lands Proposed to Transfer to SITLA
- Federal Mineral Lands Proposed to Transfer to SITLA
- Federal Surface Lands Proposed to Transfer to SITLA
- SITLA Minerals Proposed to Transfer to Federal
- SITLA Mineral Lands Proposed to Transfer to Federal

Trust Lands Minerals

- All Mineral Rights
- Partial Mineral Rights

Land Ownership and Administration

- Bureau of Land Management
- Bureau of Reclamation
- Bankhead-Jones Land Use Lands
- National Parks & Historic Sites
- National Monument
- National Forest
- National Wilderness Area
- National Wildlife Refuge
- Other Federal
- Military Reservations and Corps of Engineers
- Private
- State Trust Lands
- State Sovereign Land
- State Parks and Recreation
- State Wildlife Reserve/Management Area
- Other State
- Tribal Lands



Data represented on this map is for REFERENCE USE ONLY and is not suitable for legal, engineering, or surveying purposes. Users of this information should review or consult the primary data and information sources to ascertain the usability of the information. The Trust Lands Administration provides this data in good faith and shall in no event be liable for any incorrect results, or any special, indirect or consequential damages to any party, arising out of or in connection with the use of the data herein.

Land parcels, lease boundaries and associated Trust Lands Administration data layers may have been adjusted to allow for visual "best fit". The Surface Ownership Land Status data (if present) are maintained by the Trust Lands Administration to reflect current trust land status and surface ownership. Lakes, rivers, streams, highways, roads, county and state boundaries are distributed by the Utah Geospatial Resource Center and/or other sources as specified. Contour lines (if present) were generated from USGS 10 meter DEM.

Please Note: While the Trust Lands Administration seeks to verify data for accuracy and content, discrepancies may exist within the data. Acquiring the most updated Trust Lands Administration ownership GIS data may require contacting the GIS staff directly 801-638-5100 or TLA-GIS@utah.gov. The Trust Lands Administration GIS department welcomes your comments and concerns regarding the data and will attempt to resolve issues as they are brought to our attention.

For Reference Use Only
 Name: John D. Dingell Act 30W40_PRCO
 Produced: February 19, 2025 SITLA
 Coordinate System: NAD 1983 UTM Zone 12N